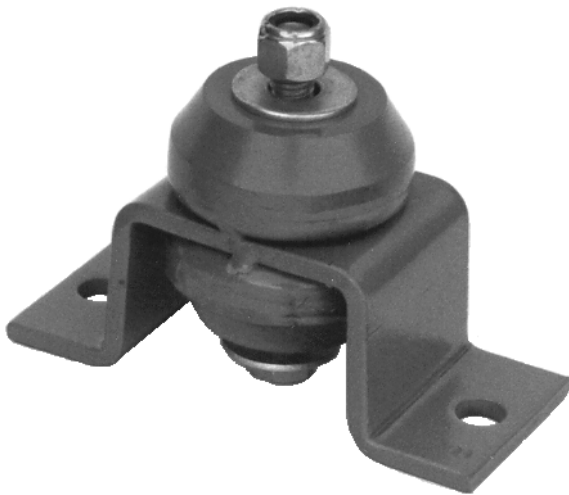




# SERIES 1060 MOBILE ISOLATORS

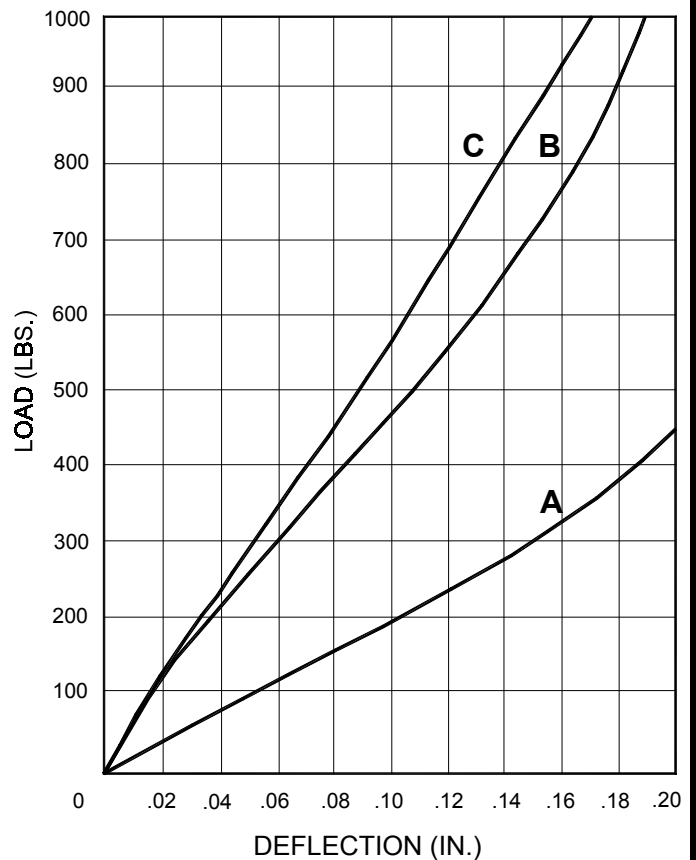
CATALOG NO. 90A-609-D



**Pre-Engineered Design:** Series 1060 isolators are designed for different load ranges. A steel bushing is properly sized for excellent isolation efficiency and motion control.

**Safety Protection:** The through-bolt and double-acting designs result in an all directional safety isolator suitable for stationary and mobile applications.

**All Directional Design:** Series 1060 isolators can be used as floor support, overhead suspension, and wall mounted stabilizer.

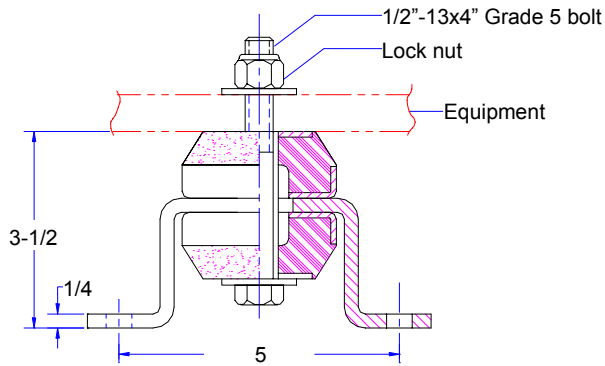
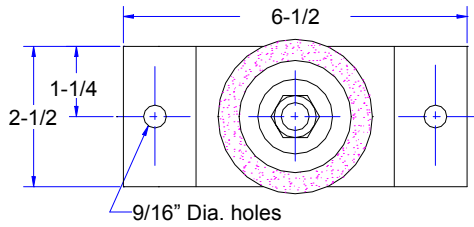


## ACE MOUNTINGS CO., INC.

11 Cross Avenue  
South Amboy, NJ 08879  
Tel: (732)721-6200 Fax: (732)721-5005  
Email: [acemount@att.net](mailto:acemount@att.net)  
Website: [www.acemount.com](http://www.acemount.com)

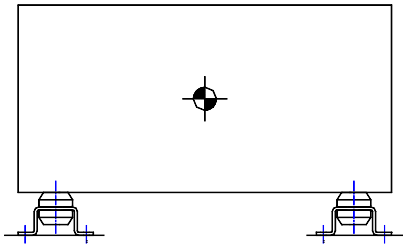
MP950003

## DIMENSIONS & LOAD RATING

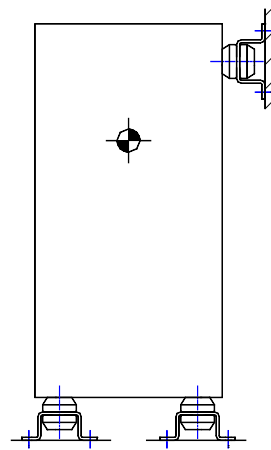


Size	Load Ranges ( Lbs. )	
	.09"	.12"
A	150	250
B	400	600
C	600	750

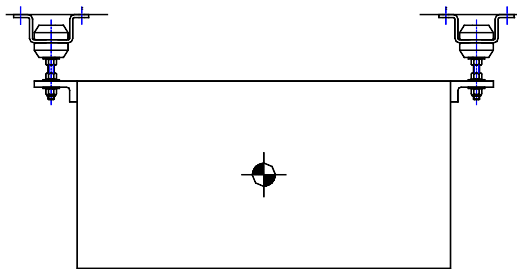
## TYPICAL INSTALLATIONS



FLOOR MOUNT



FLOOR MOUNT  
AND STABILIZER



OVERHEAD SUSPENSION

# ACE MOUNTINGS CO., INC.

11 Cross Avenue  
 South Amboy, NJ 08879  
 Tel: (732)721-6200 Fax: (732)721-5005  
 Email: [acemount@att.net](mailto:acemount@att.net)  
 Website: [www.acemount.com](http://www.acemount.com)