

**APPLICATION**

A compact weather muffler for areas where high quality silencing is not required.

Typical Attenuation: 10 to 15 dB'A'

**INSTALLATION**

May be installed in any position

**CONSTRUCTION**

All welded heavy-duty aluminized steel shell & heads. Unique design allows rain entering the outlet to drain out the bottom without entering the manifold.

Available With Three Inlet Options

- Style C:** Slotted ID Cuffed Inlet
- Style N:** Male Threaded Pipe Nipple Inlet
- Style F:** 125/150# ANSI Flanged Inlet

Place Style Letter as shown: 201-C-1105

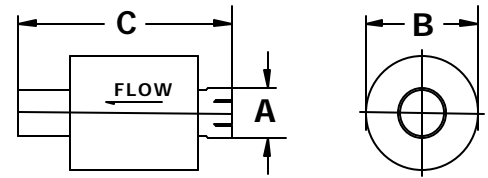
Available in stainless steel.

**FINISH**

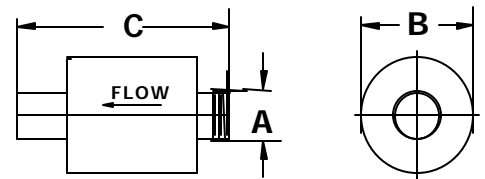
Standard finish is high heat aluminum. Consult factory for optional coatings.

**Custom Products**

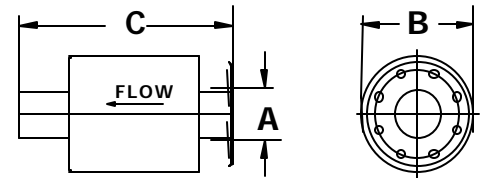
Special requirements? GT can customize its products to meet your Specifications



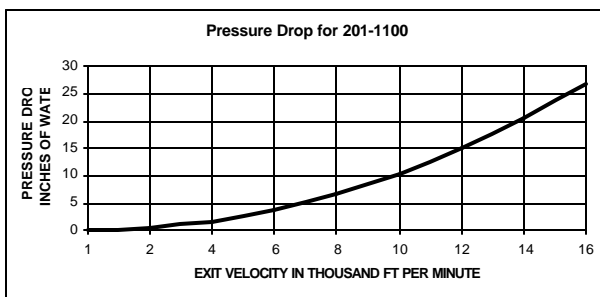
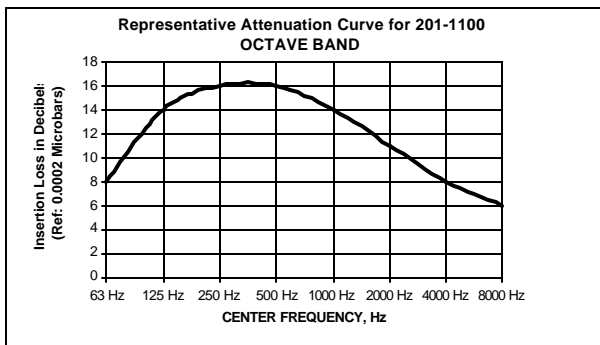
STYLE C



STYLE N



STYLE F



MODEL	A SIZE	B DIA	C OAL	WT
201-11015	1.5	5	11	12
201-1102	2	6	12	13
201-11025	2.5	7.5	13.5	16
201-1103	3	7.5	16	16
201-11035	3.5	10	17	19
201-1104	4	10	19	22
201-1105	5	10	21	24
201-1106	6	12	23	27
201-1108	8	16	27	45

All dimensions are in inches  
Consult factory for larger sizes.

**Note: "C" (Cuff) Option is not available for 1.5" models**