

APPLICATION

A rugged heavy duty silencer for commercial or industrial areas where ambient noise levels are relatively high.

Typical Attenuation: 14 to 20 dB'A'

INSTALLATION

May be installed in any position

CONSTRUCTION

All welded heavy duty steel construction. . Standard with 125/150# steel plate flanges .

MATERIAL OPTIONS

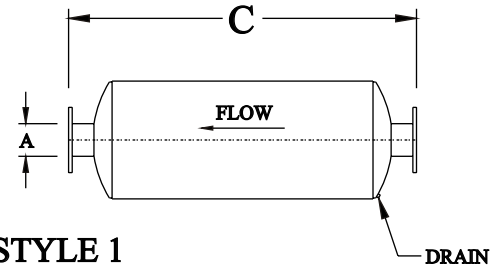
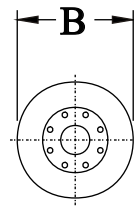
A variety of material options are provided to satisfy most applications and budgets:

- C** Carbon Steel
- AS** Aluminized Shell
- AH** Aluminized Shell and Heads
- S** Stainless Steel

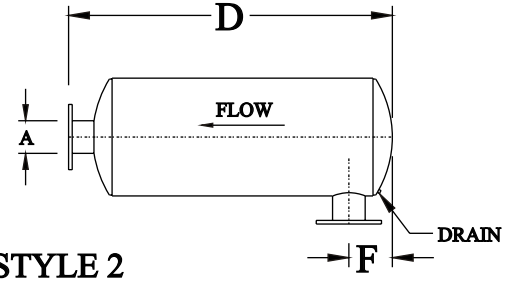
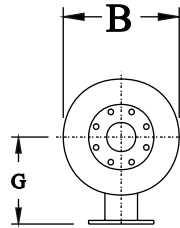
FINISH

Standard finish is high heat silicone black or aluminum, depending on material options. Consult factory for optional coatings.

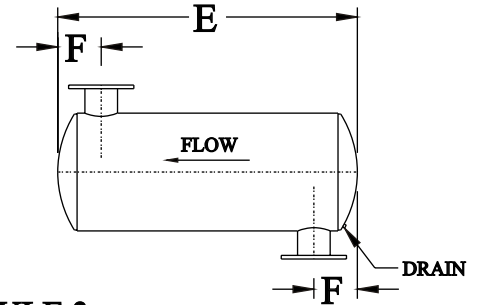
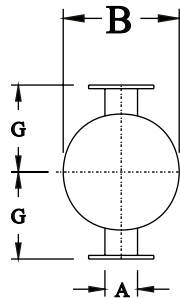
STAINLESS STEEL OPTIONS: 304, 316, & 316L



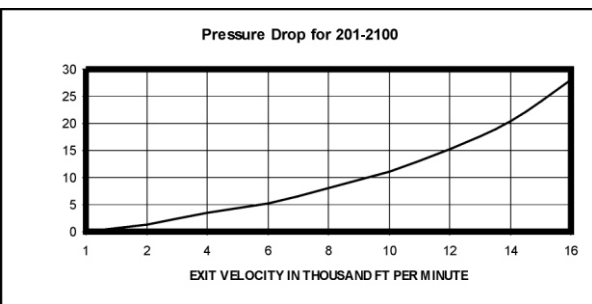
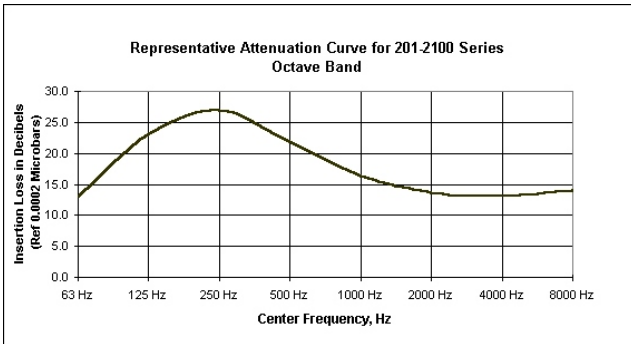
STYLE 1



STYLE 2



STYLE 3



Model	A SIZE	B DIA	C OAL-1	D OAL-2	E OAL-3	F MIN	G	WT
201-2104	4	10	36	33	30	5	8	48
201-2105	5	10	42	39	36	5	9	55
201-2106	6	12	42	39	36	6	9	65
201-2108	8	18	49	45	42	8	13	150
201-2110	10	22	62	59	56	12	15	205
201-2112	12	26	63	59	56	13	17	260
201-2114	14	30	76	73	70	15	19	475

ORDERING INFORMATION

When ordering, please place Material and Style Options as illustrated in the examples below:

- 201-2104-2-C** Carbon Steel Construction with Style 2 -- Side Inlet
- 201-2112-3-AS** Aluminized Shell with Style 3 -- Side Inlet (x) Side Outlet
- 201-2108-1-S** Stainless Steel with Style 1 -- End Inlet

All dimensions are in inches.
Consult Factory for Larger Sizes
Please specify desired style after part number: 201-2104-2