

**APPLICATION**

Special dual inlet silencers designed exclusively for Cummins engines. Silencers are designed for use in areas where ambient noise levels are very low, and high or critical grade of silencing is required.

**RATING**

Typical attenuation: 25 to 33 dB'A'

**CONSTRUCTION**

Silencers feature heavy-duty double shell steel construction. Standard 125/150# steel plate flanges.

**MATERIAL OPTIONS**

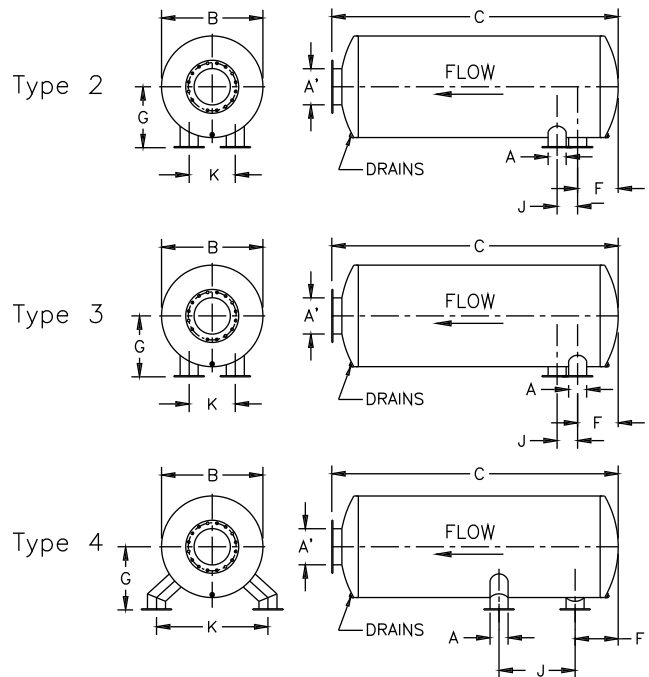
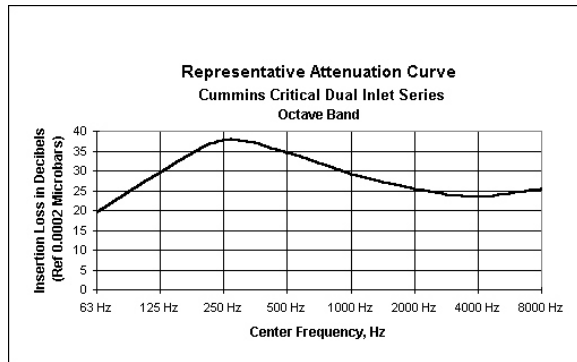
A variety of material options are provided to satisfy most applications and budgets:

- C** Carbon Steel
- AS** Aluminized Shell
- AH** Aluminized Shell and Heads
- S** Stainless Steel

**FINISH**

Standard finish is high heat silicone black. Consult factory for optional coatings.

**STAINLESS STEEL OPTIONS:** 304, 316, & 316L



MODEL		TYPE	A INLETS	A' OUTLET	B DIA	C OAL	F MIN	F MAX	G	J	K
211-5110-VTA28-G5	600 DFGB	3	5	10	28	96	8.0	44.0	18	1.95	12.54
211-5108-VTA28-G5	550 DFGB	3	5	8	24	71	8.0	29.0	16	1.95	12.54
211-5108-VTA28-G5	500 DFGB	3	5	8	24	71	8.0	29.0	16	1.95	12.54
211-5108-VTA28-G5	450 DFGB	3	5	8	24	71	8.0	29.0	16	1.95	12.54
211-5110-VTA28-G7	750 DFGE	3	5	10	28	96	8.0	44.0	18	1.66	11.81
211-5110-QST30-G1	750 DFHA	2	6	10	28	96	8.0	44.0	18	4.18	12.11
211-5110-QST30-G1	620 DFHA	2	6	10	28	96	8.0	44.0	18	4.18	12.11
211-5110-QST30-G2	800 DFHB	2	6	10	28	96	8.0	44.0	18	4.18	12.11
211-5110-QST30-G2	700 DFHB	2	6	10	28	96	8.0	44.0	18	4.18	12.11
211-5110-QST30-G3	900 DFHC	2	6	10	28	96	9.0	44.0	18	4.18	13.30
211-5112-QST30-G3-5	1000 DFHD	2	6	12	36	99	10.0	40.0	22	4.18	13.30
211-5112-KTA38-G3	900 DFJC	2	6	12	36	99	10.0	20.0	22	5.66	13.33
211-5110-KTA38-G3	800 DFJC	2	6	10	28	96	8.0	18.0	18	5.66	13.33
211-5112-KTA38-G4-5	1000 DFJD	2	6	12	36	99	10.0	20.0	22	5.66	13.33
211-5112-KTA38-G4-5	880 DFJD	2	6	12	36	99	10.0	20.0	22	5.66	13.33
211-5114-KTA50-G2	1100 DFLB	4	6	14	36	135	12.0	66.0	22	67.74	36.46
211-5114-KTA50-G3-4	1200 DFLD	3	6	14	36	135	12.0	46.0	22	13.87	10.32
211-5112-KTA50-G3-4	1250 DFLE	3	6	12	36	99	11.0	31.0	22	13.87	10.32
211-5112-KTA50-G3-4	1120 DFLE	3	6	12	36	99	10.0	31.0	22	13.87	10.32
211-5114-KTA50-G9	1500 DFLE	3	6	14	36	135	12.0	46.0	22	13.87	10.32
211-5114-KTTA50-G2	1500 DFMB	4	8	14	36	135	12.0	18.0	22	61.1	35.22
211-5112-KTTA50-G2	1280 DFMB	4	8	12	36	135	12.0	14.0	22	61.1	35.22

**ORDERING INFORMATION**

When ordering, please place Material Options as illustrated in the examples on the right:

- 211-5108-VTA28G5-C** Carbon Steel Construction
- 211-5112-KTTA50G2-AS** Aluminized Shell
- 211-5114-KTTA50-S** Stainless Steel

See price sheets for additional information.

# GT Exhaust Systems, Inc.

Phone: 402-323-7272 Fax: 402-323-7270

# CUMMINS SERIES DUAL INLETS

## QSK Series

### Critical & Super Critical Silencers

#### APPLICATION

Special dual inlet extra heavy-duty silencers designed exclusively for Cummins QSK Series Engines. Silencers are configured for use in areas where ambient noise levels are very low, and high or critical grade of silencing is required.

#### RATING

211-5100 Critical : **25 to 33 dB'A'**  
 211-6100 Super Critical: **32 to 40 dB'A'**

#### CONSTRUCTION

Silencers feature heavy-duty steel double shell construction. Standard with 125/150# steel plate flanges.

The Super Critical mode features compressed acoustical fiberglass inserted between the double shell. Packed shell can provide significant reduction in surface temperature depending on application and ambient conditions.

#### MATERIAL OPTIONS

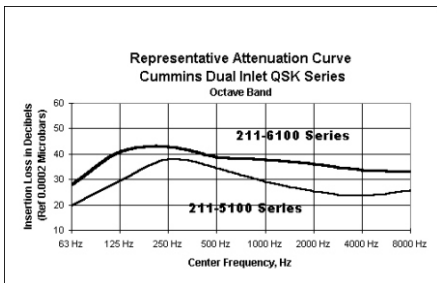
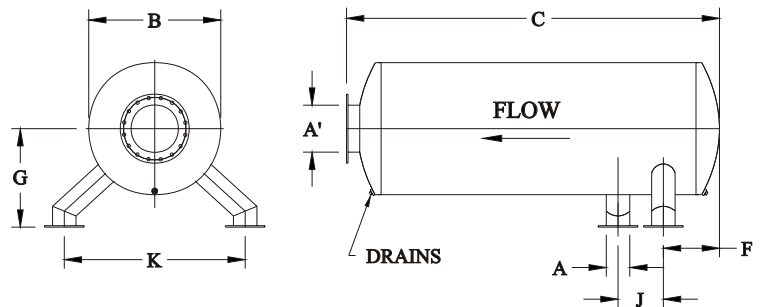
A variety of material options are provided to satisfy most applications and budgets:

- C** Carbon Steel
- AS** Aluminized Shell
- AH** Aluminized Shell and Heads
- S** Stainless Steel

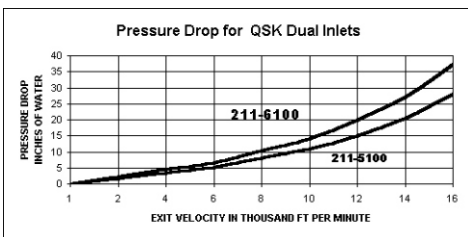
#### FINISH

Standard finish is high heat silicone black. Consult factory for optional coatings.

**STAINLESS STEEL OPTIONS:** 304, 316, & 316L



MODEL	A INLETS	A' SIZE	B DIA	C OAL	F MIN	F MAX	J	K	G	WT
<b>CRITICAL</b>										
211-5114-QSK60	10	14	36	135	15	43	13.71	54.58	32	990
211-5116-QSK60	10	16	42	137	17	43	13.71	54.58	32	1190
211-5118-QSK60	10	18	48	138	18	43	13.71	54.58	32	1490
211-5120-QSK60	10	20	48	162	20	66	13.71	54.58	32	1810
<b>SUPER CRITICAL</b>										
211-6114-QSK60	10	14	42	162	16	44	13.71	54.58	32	2025
211-6116-QSK60	10	16	45	162	18	43	13.71	54.58	32	2150
211-6118-QSK60	10	18	48	174	20	42	13.71	54.58	32	2550
211-6120-QSK60	10	20	54	176	22	42	13.71	54.58	32	3355



#### ORDERING INFORMATION

When ordering, please place Material Options as illustrated in the examples on the right:

- 211-5114-QSK60-C** Carbon Steel Construction
- 211-5114-QSK60-AS** Aluminized Shell
- 211-5114-QSK60-S** Stainless Steel

See price sheets for additional information.

2003