

APPLICATION

Advanced design provides residential attenuation and low back pressure drop in a space saving compact size. Ideal for use where ambient noise levels are relatively low. Our heavy duty compact are reduced in size and weight - compared to conventional silencers - which makes this series excellent for applications where weight and size are critical. Excellent for use inside enclosures and marine applications.

Typical Attenuation: 19 to 25 dB'A'

CONSTRUCTION

All welded heavy-duty aluminized steel construction. Silencers are internally insulated throughout with high density compressed acoustical fiberglass insulation..

THERMAL PERFORMANCE

The 301-4100 Series utilizes an acoustical and thermal insulated packed shell. The packed shell can provide significant reduction in the outer surface temperature depending on application and ambient conditions. This makes the 301 series an ideal choice for enclosures or small engine compartments. Additional outer thermal wraps are also available when lower surface temperatures are required. Consult factory for additional specifications.

FINISH

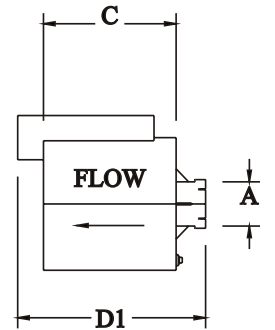
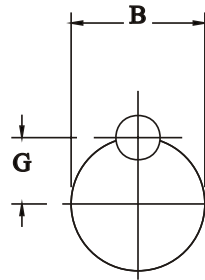
Standard finish is high heat silicone black. Consult factory for optional coatings.

STAINLESS STEEL OPTIONS: 304, 316, & 316L

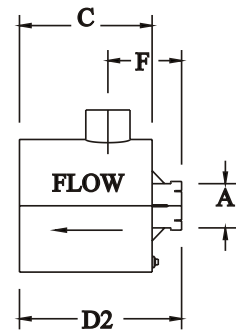
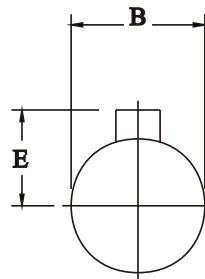
CONNECTION TYPES:

Standard with ID Slotted Cuff Inlet & OD Tube Outlet. Additional Inlet Options are available:

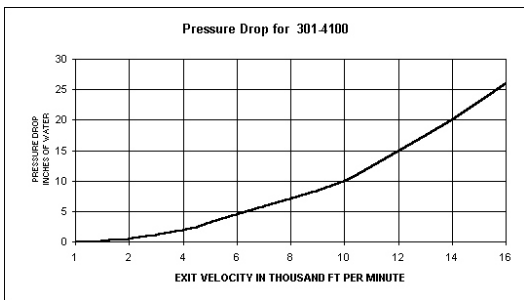
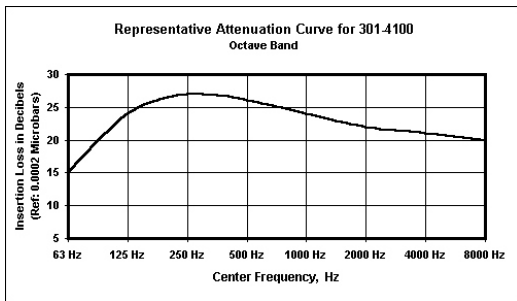
- Plain OD Tube
- NPT Male Nipple
- ANSI Flange



STYLE 1



STYLE 2



Model	A Size	B	C	D1	D2	E	F	G	WT
301-4102	2	7	7.5	13.5	10.5	6.5	8.5	3.5	12
301-41025	2.5	8	8	14	11	7	8.5	4.0	16
301-4103	3	9	9	15	12	7.5	9.5	4.5	20
301-41035	3.5	11	11	17	14	8.5	11	5.5	29
301-4104	4	12	13	19	16	9	13	7	35
301-4105	5	14	14	20	17	10	13.5	7	45
301-4106	6	16	18	26	22	12	18	8	73
301-4108	8	20	22	30	26	14	21	10	110

All dimensions are in inches. Consult Factory for Larger Sizes
Please enter Style Number after part number. 301-4106-2