

APPLICATION

New space conserving radial design is specifically engineered where ambient noise levels are relatively low. The low profile design is ideal for engine enclosures, trailers, marine, or any application in which overall height is critical and/or low radiated heat is necessary.

Typical attenuation: 19-25 dB'A'

CONSTRUCTION

All welded heavy-duty steel with compressed thermal acoustical insulation inserted within the double shell construction of the silencer. Silencers are standard slotted I.D. cuff inlets & O.D. tube outlet on sizes thru 3.5"; and 125/150# ANSI flanged inlet and outlet on sizes 4" and up.

THERMAL PERFORMANCE

The 401-4100 Series utilizes an acoustical and thermal insulated packed shell. The packed shell can provide significant reduction in the outer surface temperature depending on application and ambient conditions. This makes the 401 series an ideal choice for enclosures or small engine compartments. Consult factory for further specifications and surface temperature analysis.

Additional outer thermal wraps are also available when lower surface temperatures are required.

MATERIAL OPTIONS

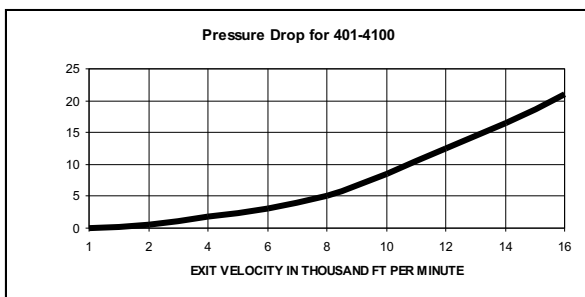
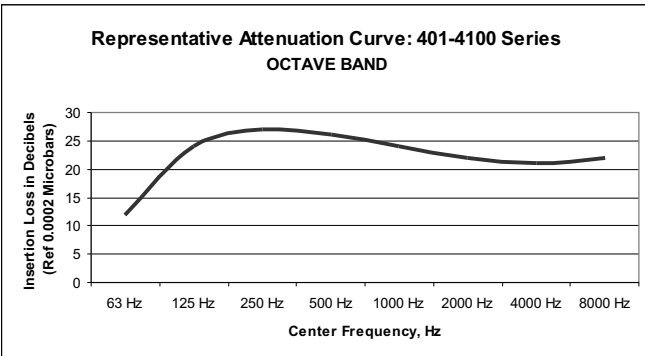
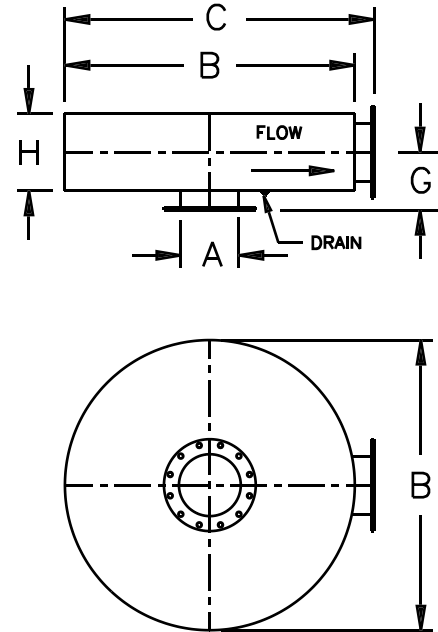
A variety of material options are provided to satisfy most applications and budgets:

- C Carbon Steel
- AS Aluminized Steel
- S Stainless Steel

FINISH

Standard finish is high heat silicone black. Consult factory for optional coatings.

STAINLESS STEEL OPTIONS: 304, 316, & 316L



All dimensions are in inches.
Consult Factory for Larger Sizes

MODEL	A SIZE	B	C OAL	G	H BODY	BRACKETS	WT
401-4102	2	12	15	5.3	4.5	29-H-02	16
401-41025	2.5	13	16	5.5	5	29-H-025	20
401-4103	3	17	20	5.5	5	29-H-03	30
401-41035	3.5	18	21	6	6	29-H-035	40
401-4104	4	20	24	7	6	29-H-04	65
401-4105	5	21	25	8	8	29-H-05	80
401-4106	6	24	28	8.8	9.5	29-H-06	100
401-4108	8	32	36	9.5	11	29-H-08	185
401-4110	10	38	42	11	14	29-H-10	280
401-4112	12	45	49	12	16	29-H-12	415
401-4114	14	47	51	14.5	21	29-H-14	545
401-4116	16	54	58	15.5	23	29-H-16	660
401-4118	18	62	66	16.5	25	29-H-18	825

ORDERING INFORMATION

When ordering, please place Material Option as illustrated in the examples below:

- 401-4110-C Carbon Steel
- 401-4114-AS Aluminized Steel
- 401-4108-S Stainless Steel

When ordering brackets, please specify TOP or BOTTOM Mount.