

# GT Exhaust Systems, Inc.

Phone: 402-323-7272 Fax: 402-323-7270

# 401-C-6100 SERIES

## Slim Line COOL Super Critical

### APPLICATION

New space conserving radial design is engineered to provide a high degree of attenuation in a low profile size. Ideal for engine enclosures, trailers, marine, or any application in which overall height is critical and/or low radiated heat is critical. The cool series provides additional internal insulation for lower surface temperatures.

Typical attenuation: 32-38 dB'A'

### CONSTRUCTION

All welded heavy duty steel with 2 inches of compressed thermal acoustical insulation inserted between the double shell construction of the silencer. Silencers are standard with 125/150# ANSI flanged inlet and outlet.

### THERMAL PERFORMANCE

The 401-C-6100 Series utilizes an acoustical and thermal insulated packed shell. In a typical exhaust gas application, thermal conductivity (K) of the standard 401 silencer body is approximately 0.5 BTU/ft<sup>2</sup>/°F. The Cool Series (K) is approximately 0.25 BTU/ft<sup>2</sup>/°F. This combined with a high surface area emissivity yields a significantly low surface temperature. Actual figures will vary depending on application and ambient conditions. Consult with factory for additional specifications and surface temperature analysis.

Additional outer thermal wraps are also available when lower surface temperatures are required.

### MATERIAL OPTIONS

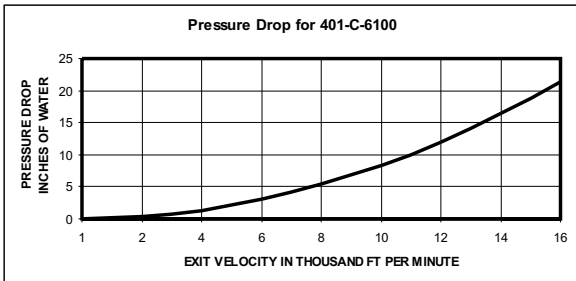
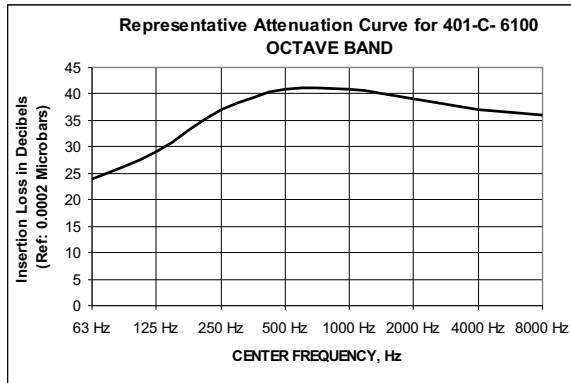
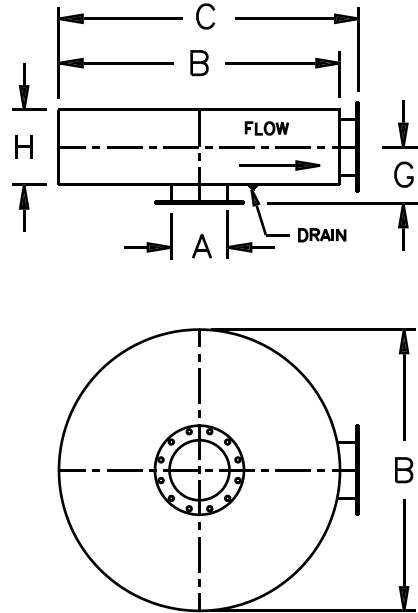
A variety of material options are provided to satisfy most applications and budgets:

- C** Carbon Steel
- AS** Aluminized Steel
- S** Stainless Steel

### FINISH

Standard finish is high heat silicone black. Consult factory for optional coatings.

### STAINLESS STEEL OPTIONS: 304, 316, & 316L



MODEL	A SIZE	B	C OAL	G	H BODY	BRACKETS	WT
401-C-6104	4	32	36	8.5	10	29-H-04	170
401-C-6105	5	32	36	9.5	11	29-H-05	195
401-C-6106	6	38	42	9.8	11.5	29-H-06	276
401-C-6108	8	52	56	10.5	13	29-H-08	550
401-C-6110	10	59	63	12	16	29-H-10	756
401-C-6112	12	70	74	16	18	29-H-12	1005
401-C-6114	14	70	74	15.8	23.5	29-H-14	1144
401-C-6116	16	75	79	18	28	29-H-16	1364
401-C-6118	18	86	90	19	30	29-H-18	1755

### ORDERING INFORMATION

When ordering, please place Material Option as illustrated in the examples below:

- 401-C-6110-C** Carbon Steel
- 401-C-6114-AS** Aluminized Steel
- 401-C-6108-S** Stainless Steel

When ordering brackets, please specify TOP or BOTTOM Mount

All dimensions are in inches.  
Consult Factory for Larger Sizes